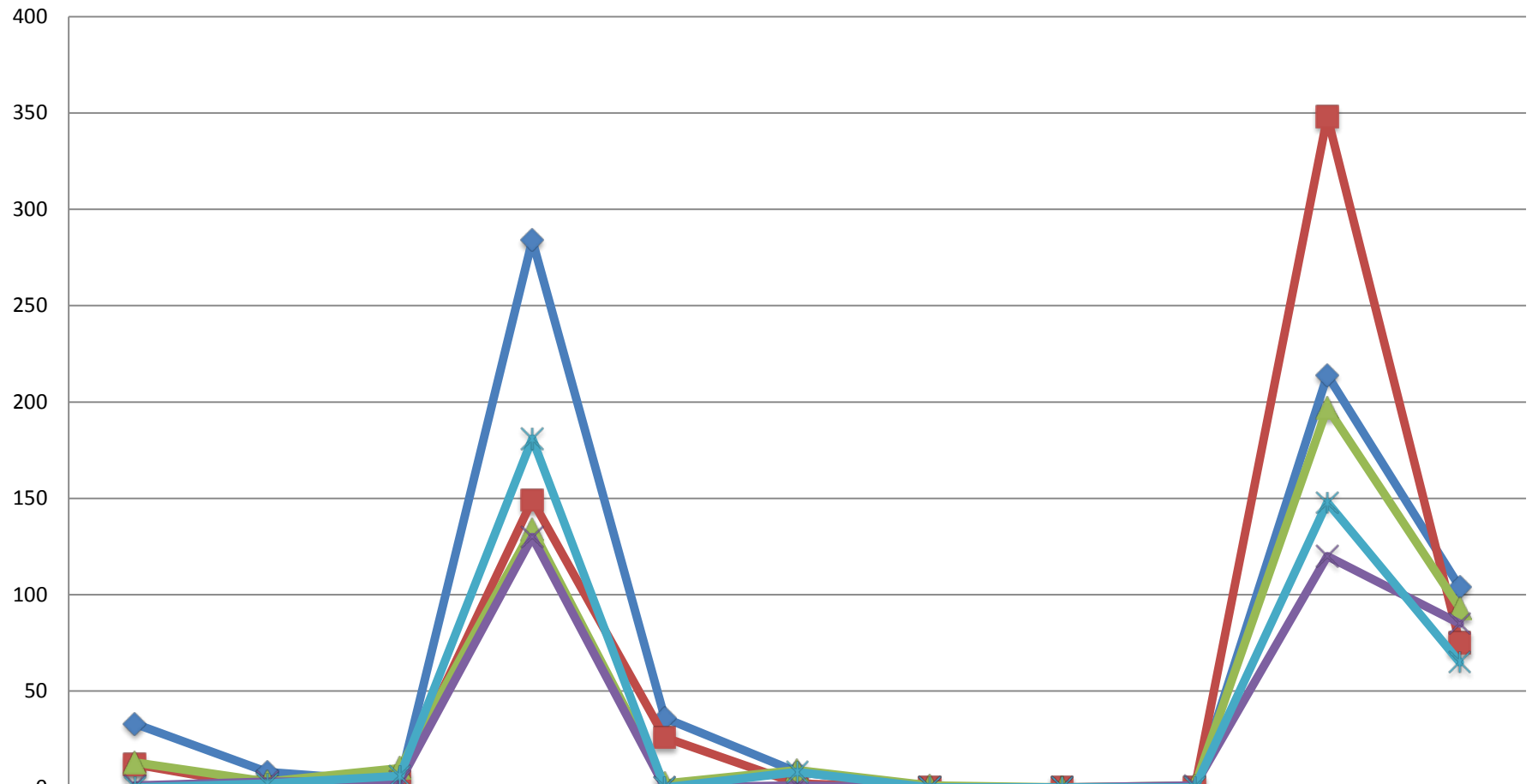


II SEMESTRE IMPORT



	ORTOF. (I)	ALCOOL(I)	OLIO(I)	RISO (I)	ZUCCHERO(I)	CEREALI(I)	SUINO(I)	LATTIERO(I)	UOVA(I)	POLLAME(I)	BOVINI (I)
LUG/AGO	33	8	3	284	36	8	0	0	0	214	104
SETT.	12	0	4	149	26	2	0	0	0	348	75
OTT.	13	3	10	134	2	9	1	0	1	197	93
NOVEM.	1	3	3	130	0	1	0	0	1	120	85
DICEM.	0	2	6	181	0	8	0	0	0	148	65