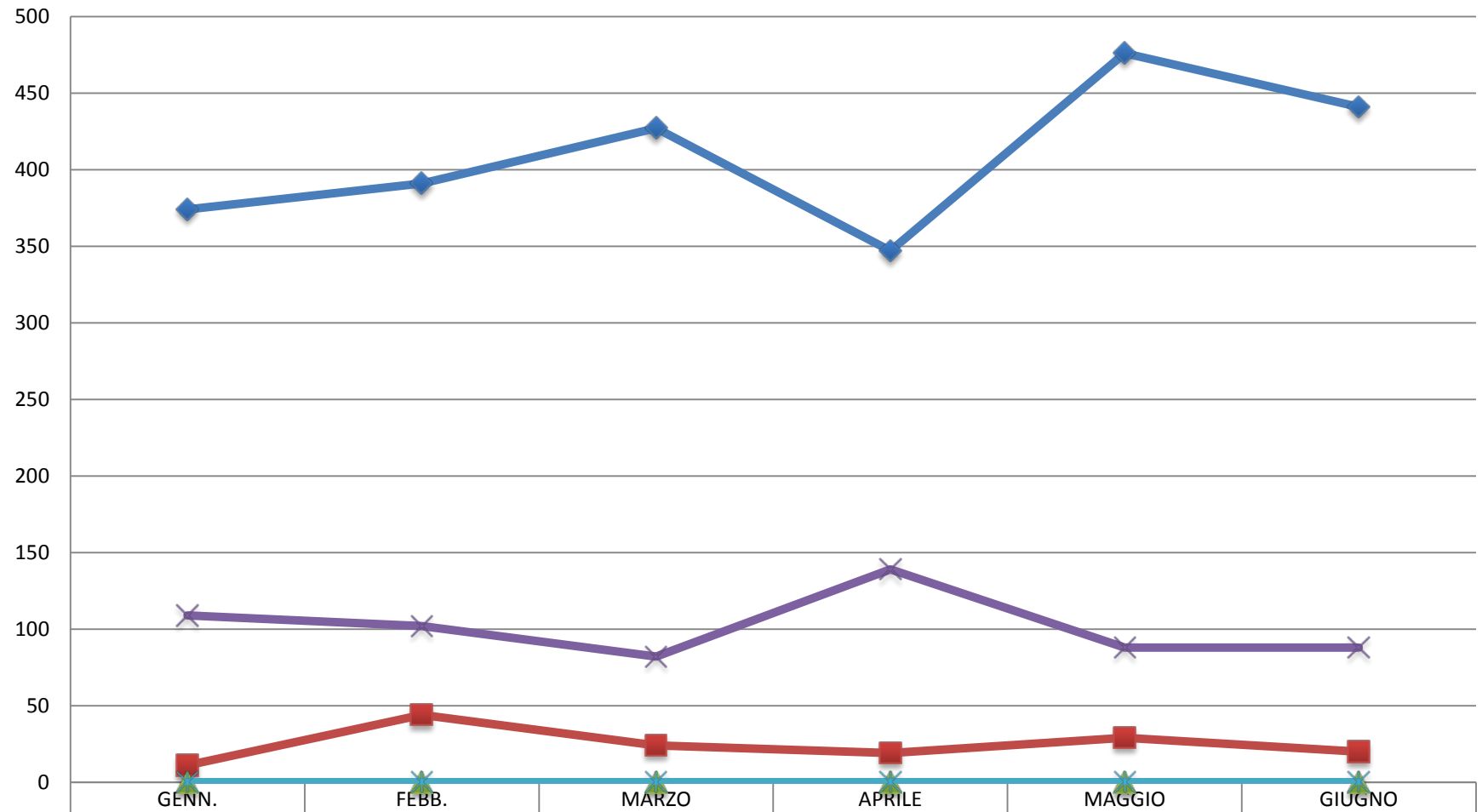


I SEMESTRE EXPORT



◆ RISO(E)	374	391	427	347	476	441
■ ZUCCHERO (E)	11	44	24	19	29	20
▲ CEREALI(E)	0	0	0	0	0	0
✕ LATTIERO (E)	109	102	82	139	88	88
✱ POLLAME (E)	0	0	0	0	0	0