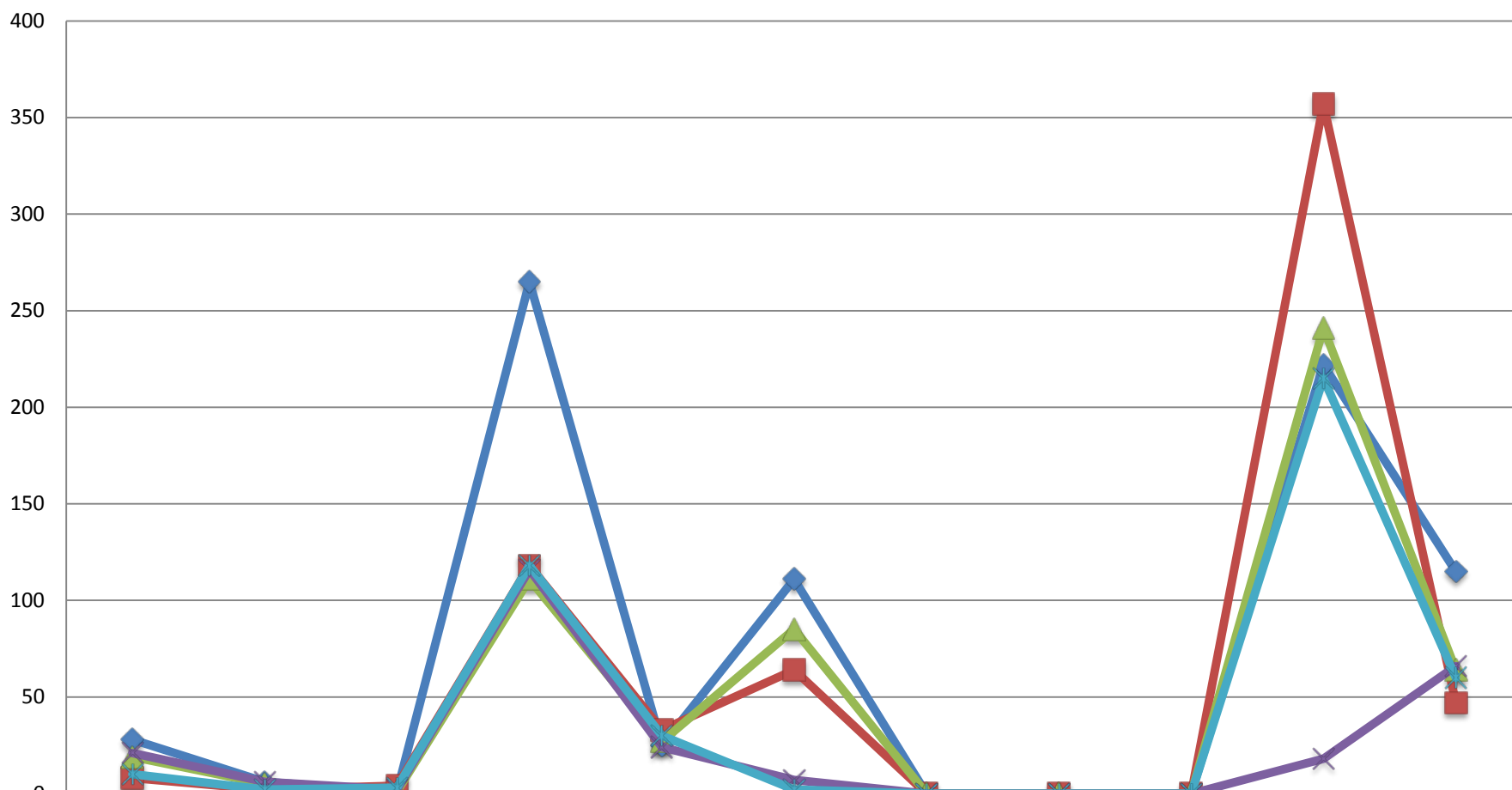


II SEMESTRE IMPORT



	ORTOF. (I)	ALCOOL(I)	OLIO(I)	RISO (I)	ZUCCHERO(I)	CERÉALI(I)	SUINO(I)	LATTIERO(I)	UOVA(I)	POLLAME(I)	BOVINI (I)
LUG/AGO	28	6	1	265	25	111	0	0	0	222	115
SETT.	8	2	4	118	33	64	0	0	0	357	47
OTT.	19	5	1	111	27	85	0	0	0	241	64
NOVEM.	21	6	2	116	24	7	0	0	0	18	66
DICEM.	10	2	3	118	30	2	0	0	0	215	60