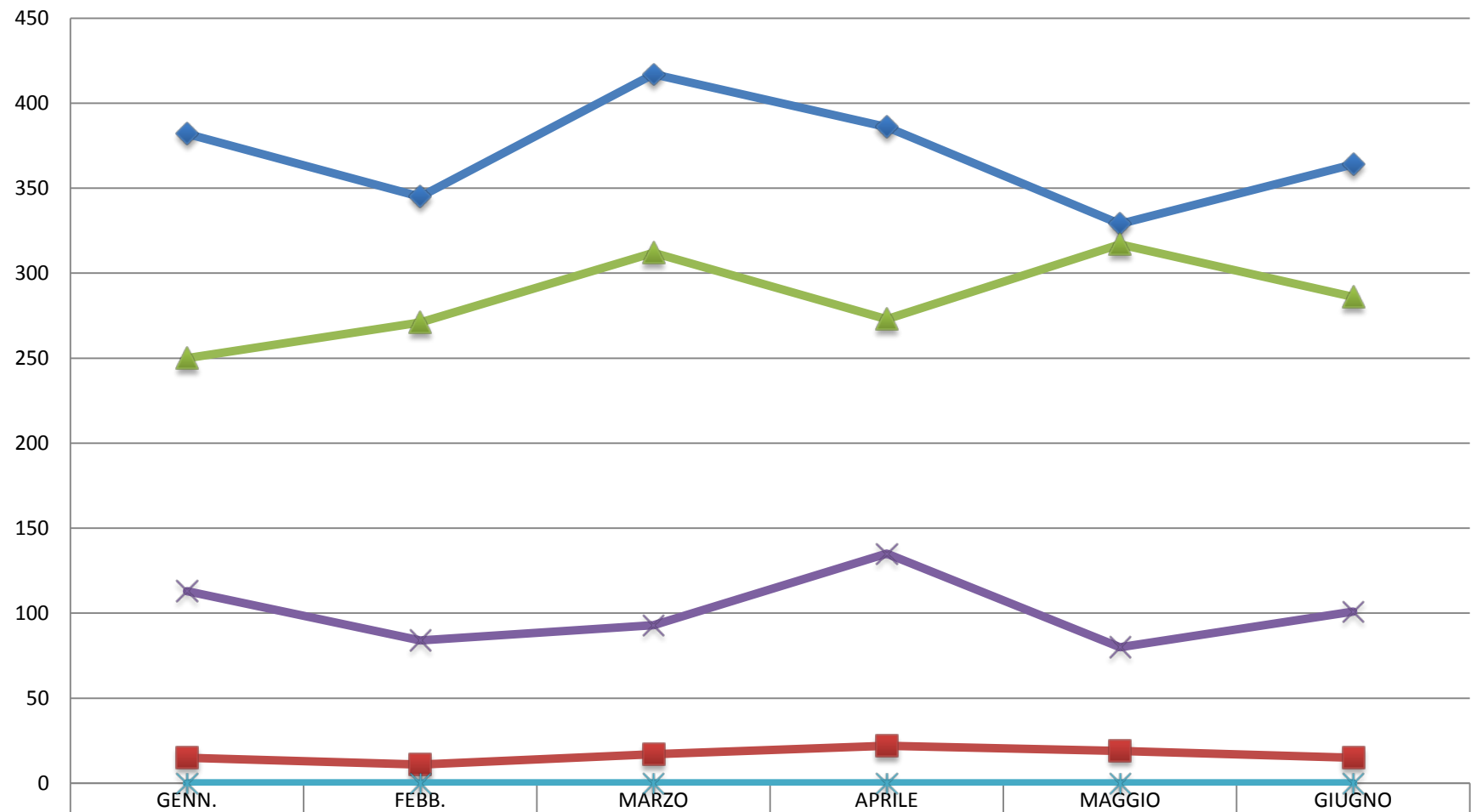


I SEMESTRE EXPORT



◆ RISO(E)	382	345	417	386	329	364
■ ZUCCHERO (E)	15	11	17	22	19	15
▲ CEREALI(E)	250	271	312	273	317	286
✕ LATTIERO (E)	113	84	93	135	80	101
✕ POLLAME (E)	0	0	0	0	0	0