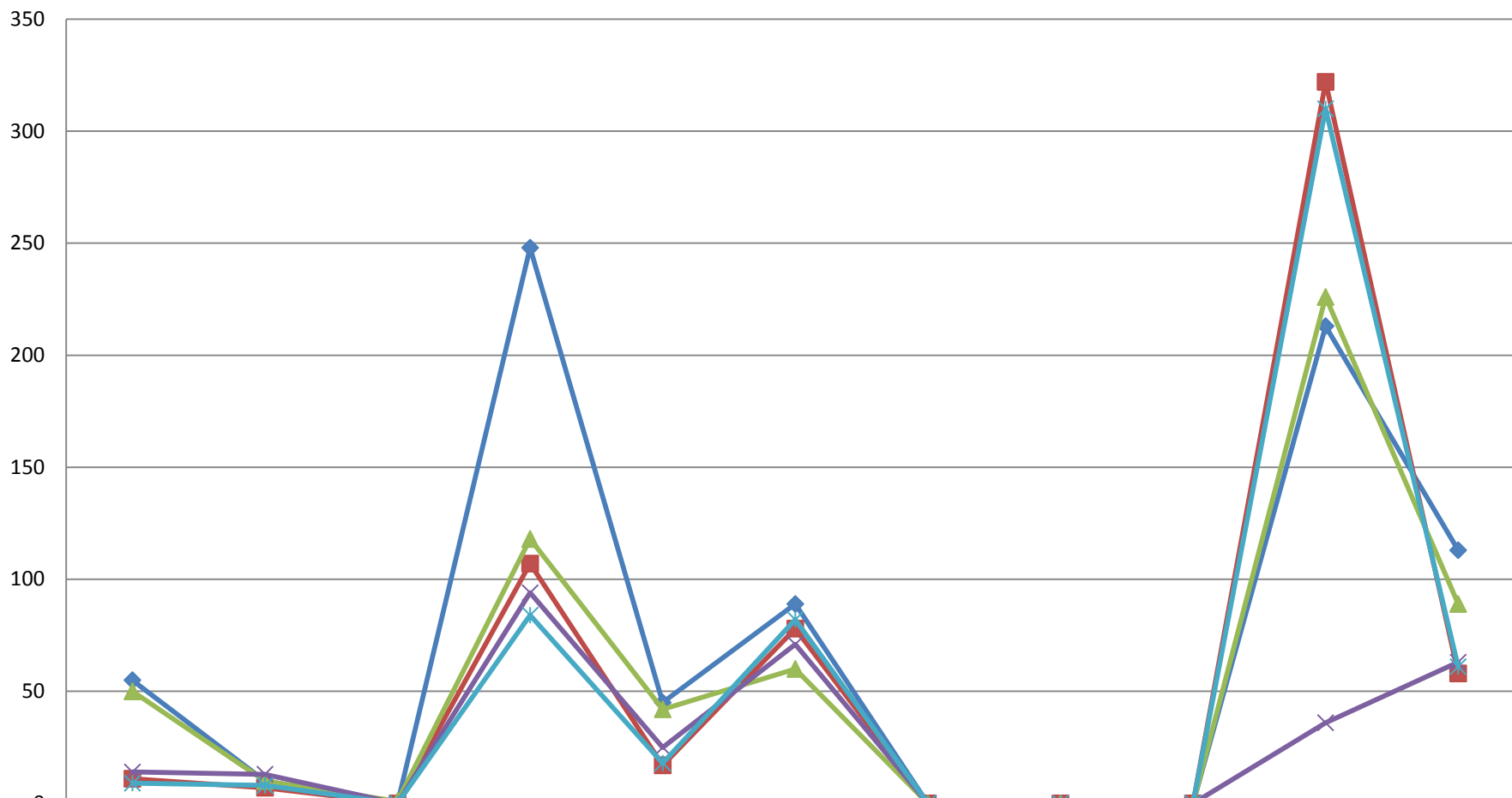


## II SEMESTRE IMPORT



	ORTOF. (I)	ALCOOL(I)	OLIO(I)	RISO (I)	ZUCCHERO(I)	CEREALI(I)	SUINO(I)	LATTIERO(I)	UOVA(I)	POLLAME(I)	BOVINI (I)
◆ LUG/AGO	55	10	0	248	45	89	0	0	0	213	113
■ SETT.	11	7	0	107	17	78	0	0	0	322	58
▲ OTT.	50	10	1	118	42	60	0	0	0	226	89
✕ NOVEM.	14	13	0	94	25	71	0	0	0	36	63
✱ DICEM.	9	8	0	84	18	82	0	0	0	310	61